




nebraskachildren

AND FAMILIES FOUNDATION



Cultivating the good life for **all** of our children.



To create positive change
for Nebraska's children
through community
engagement

Our Mission



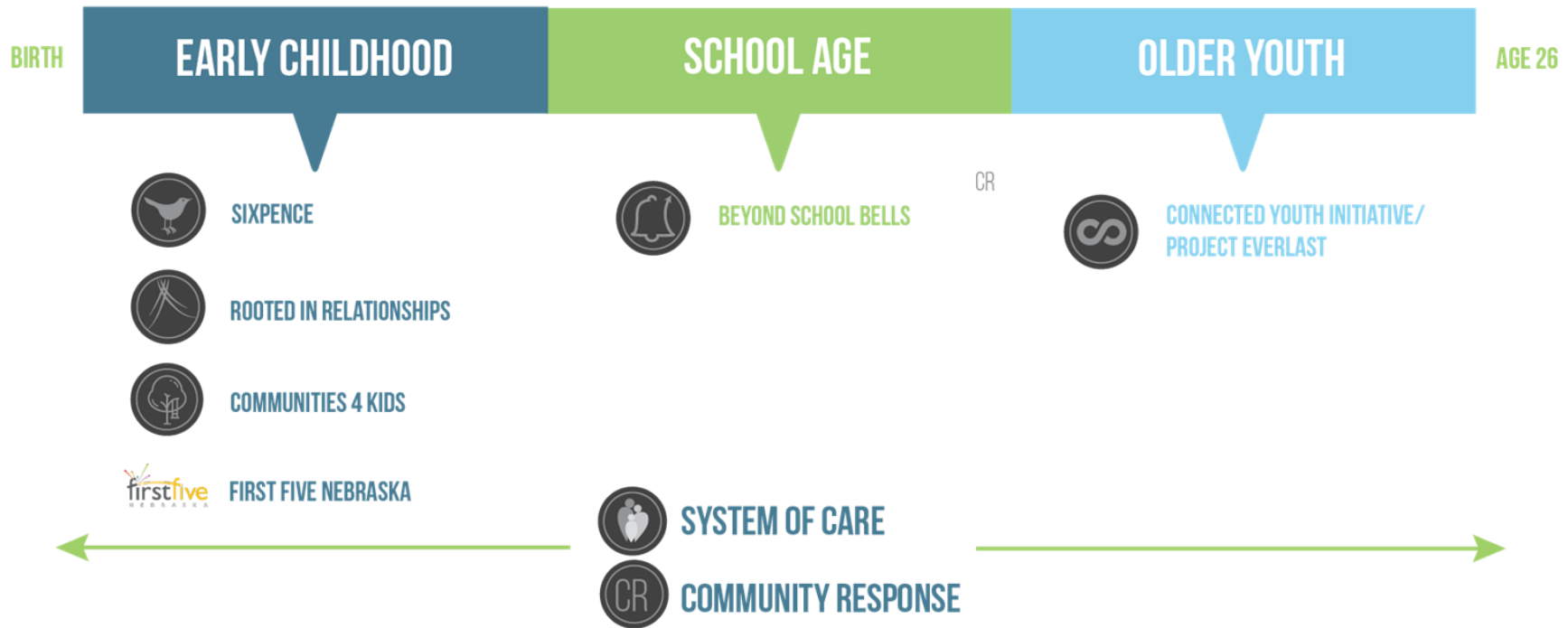


**We envision a Nebraska
where all children have
the opportunity to thrive.**

Our Vision



NEBRASKA CHILDREN INITIATIVES



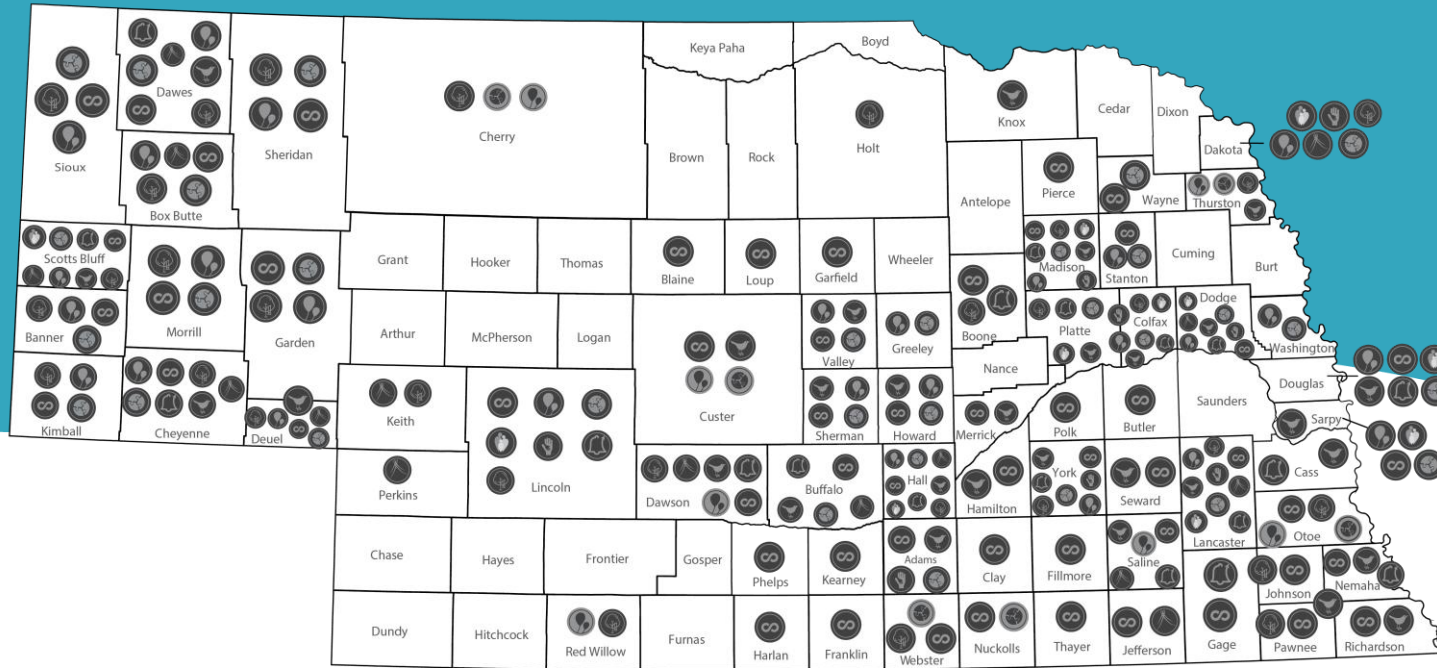
nebraskachildren
AND FAMILIES FOUNDATION



Cultivating the good life for all of our children.

Statewide presence

We are working across Nebraska with community-based programming and cradle-to-career initiatives.





Our Growth Children's Futures

Models



The home-based model uses an evidence-based home visitation program.



The center-based approach builds upon strong partnerships to connect home, school, and community.



The childcare partnerships model hinges on community partnerships with childcare providers.



Outcomes



Children, regardless of language, family risk or gender, made significant gains in attachment over time.



Our collaborative approach with providers leverages coaches to recognize and improve quality care. Each provider participates in Step Up To Quality, attaining Step 3 by the end of their third year.



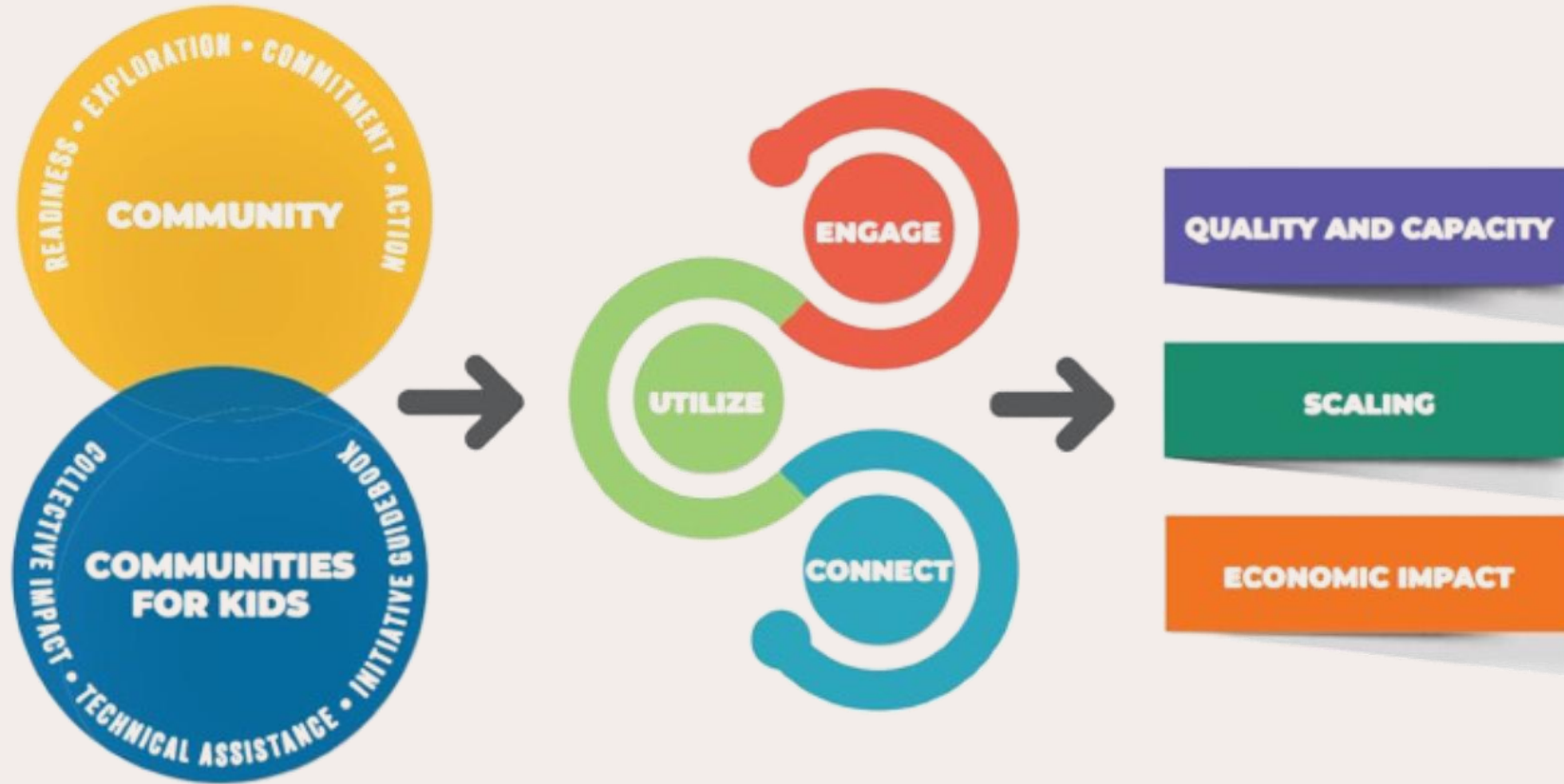
Sixpence has a strong record of family retention. Eighty-six percent of children stayed in the program until they aged out after their third birthday.



Communities for KidsTM

nebraskachildren

Initiative Design



Initiative Impact

Quality & Capacity

- 3,151 Capacity Increase
- 44 New Programs
- 83% Step Up to Quality participation
- 68% Subsidy Acceptance

Initiative Scaling

- 89 C4K Community Partnerships
- 14 Interested Communities
- National Interest
- C4K Convening

Economic Indicators

- \$570,000 to 130 Programs
- 88% Reported Positive Impact On Business
- 57% Reported An Increase In Parental Work Hours
- \$6,370,772 Locally Leveraged Funds

Marti Beard

mbeard@nebraskachildren.org

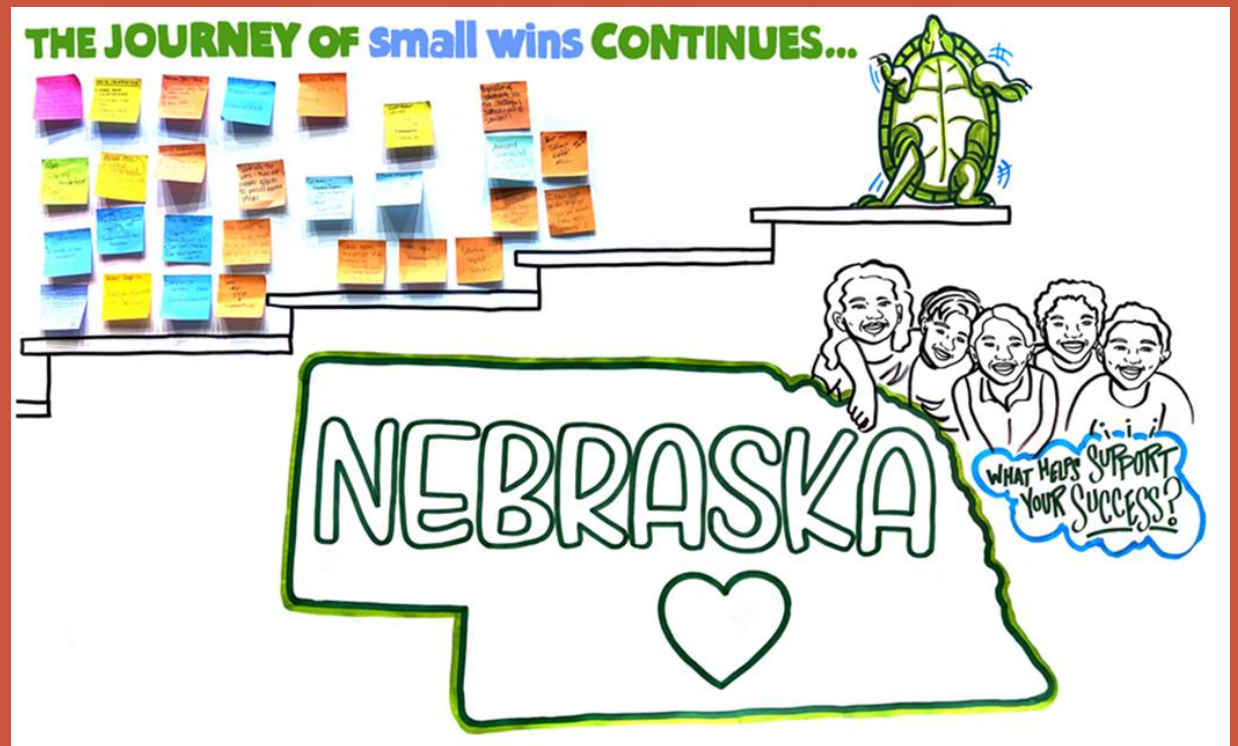
(402) 310 – 7251

communitiesforkids.org



Communities for Kids™

nebraskachildren



Thank you!

Rooted in Relationships

A systems approach to enhance
the social-emotional development
of Nebraska's young children.

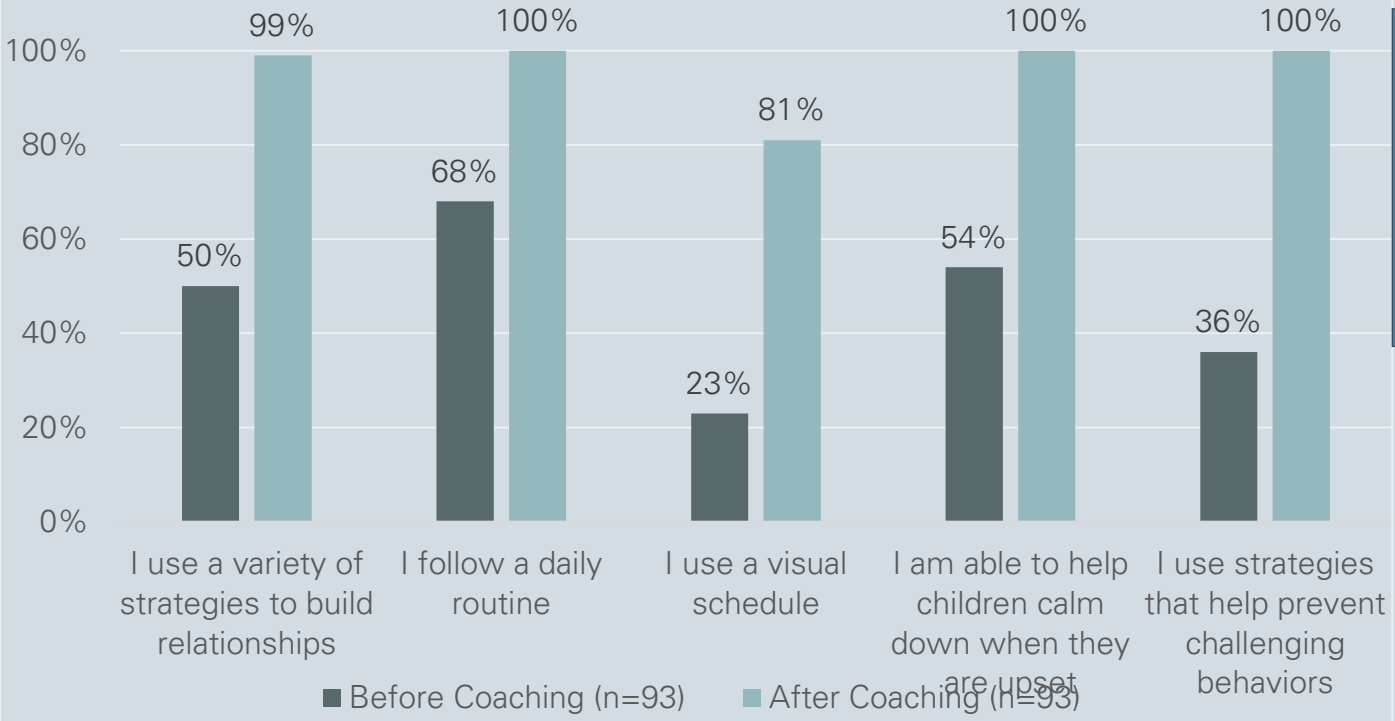
www.rootedinrelationships.org



Rooted in Relationships: Scope of Work



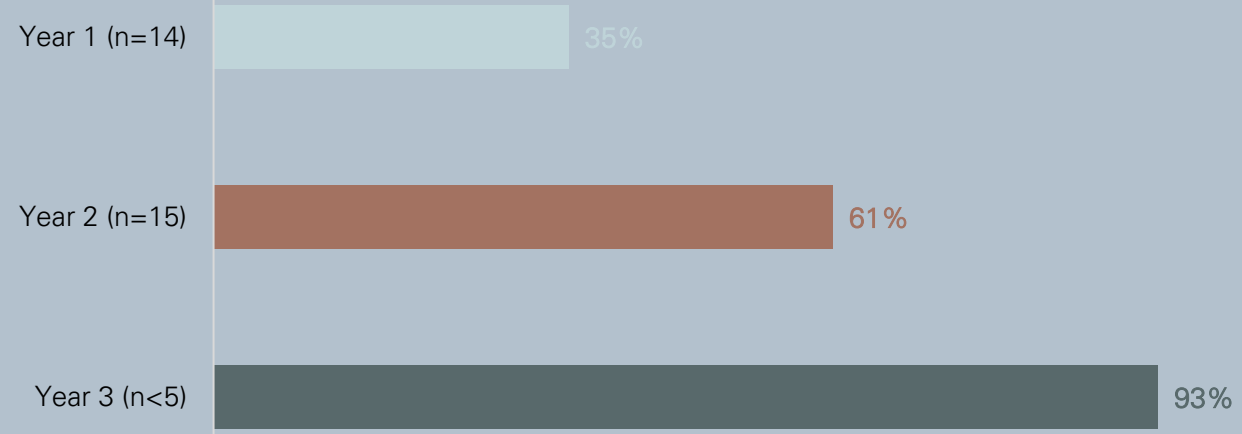
Social Emotional Competencies Year 2 Providers



100%

Of Year 3 providers found Pyramid Model coaching, training, and provider collaboration meetings to be valuable

Family Child Care Home - Benchmarks of Quality Overall Practices in Place (2022-2025)



*"I loved this experience and the new techniques that I have learned. The networking in this program was a big help too."
-Year 3 RiR Provider*

↑ Program Goal 75%

Provider Perspective

Lacey Ahrens

Family Home Child Care 2

Buffalo County

