

THE REIMAGINED + REDESIGNED EARLY CHILDHOOD EDUCATION PLAYBOOK

a St. Louis community-led response to the *First Step to Equity* report

Activating Power Towards Early Childhood Systems Change



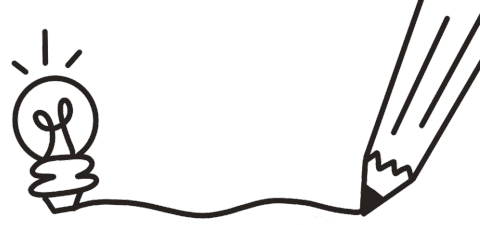
Power Towards What?

Systems Change:

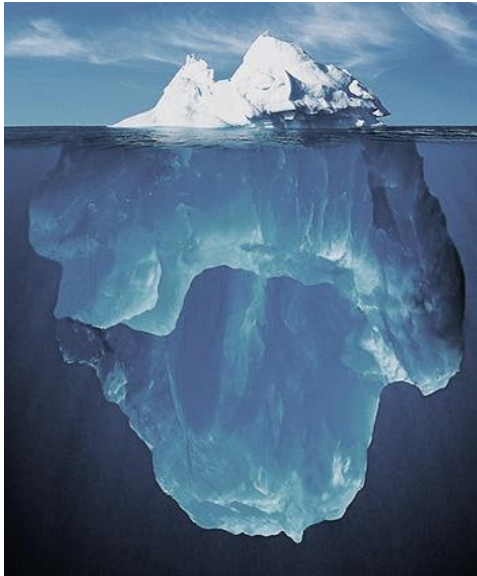
shifting the conditions that
are holding a problem in
place. Systems change takes
TIME.



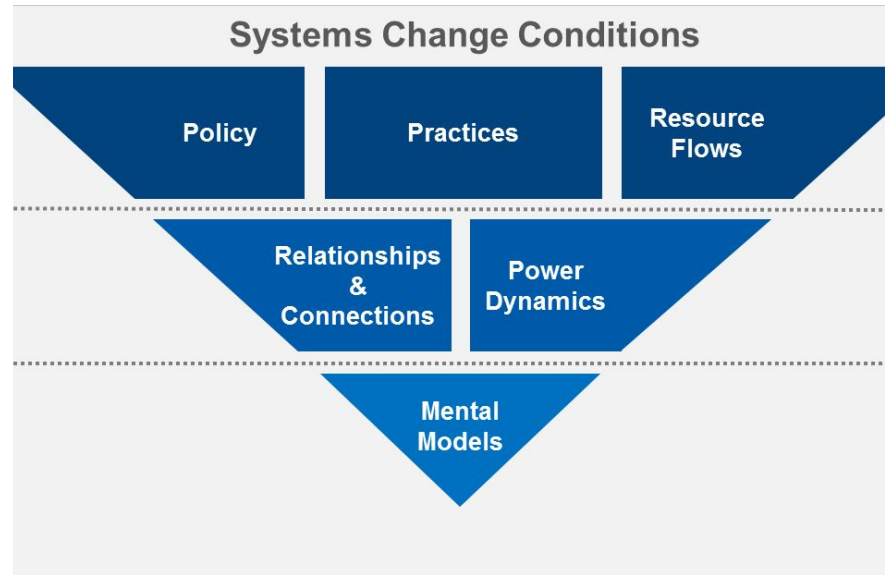
Systems Change



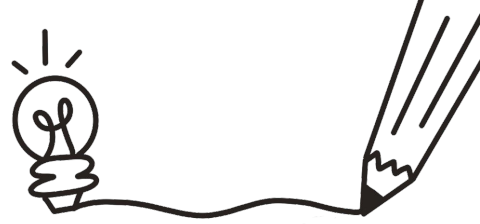
The Iceberg



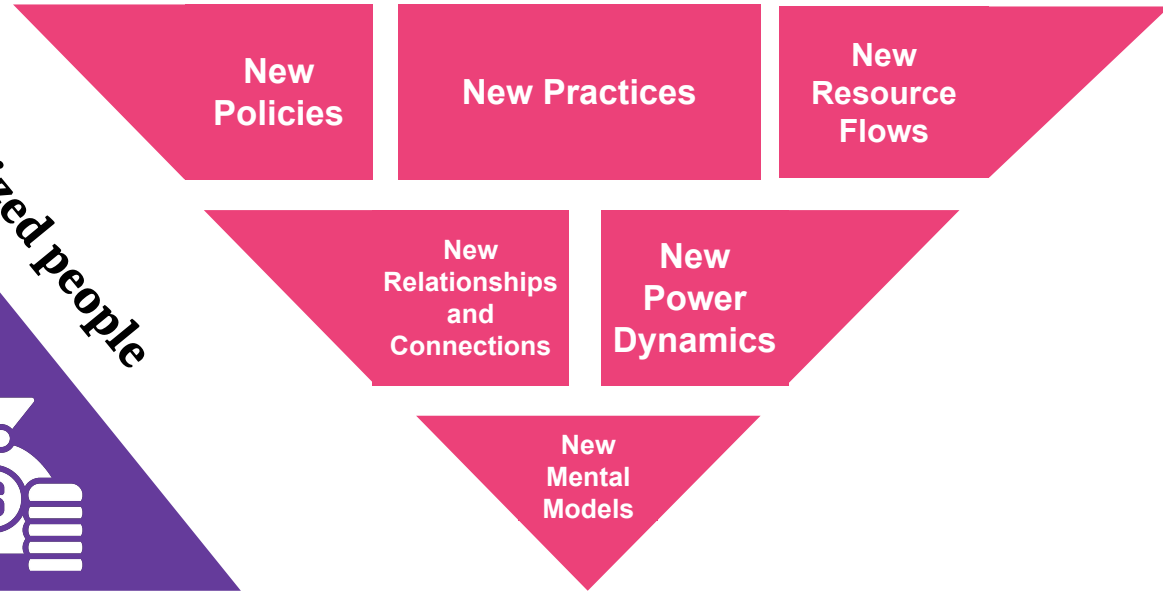
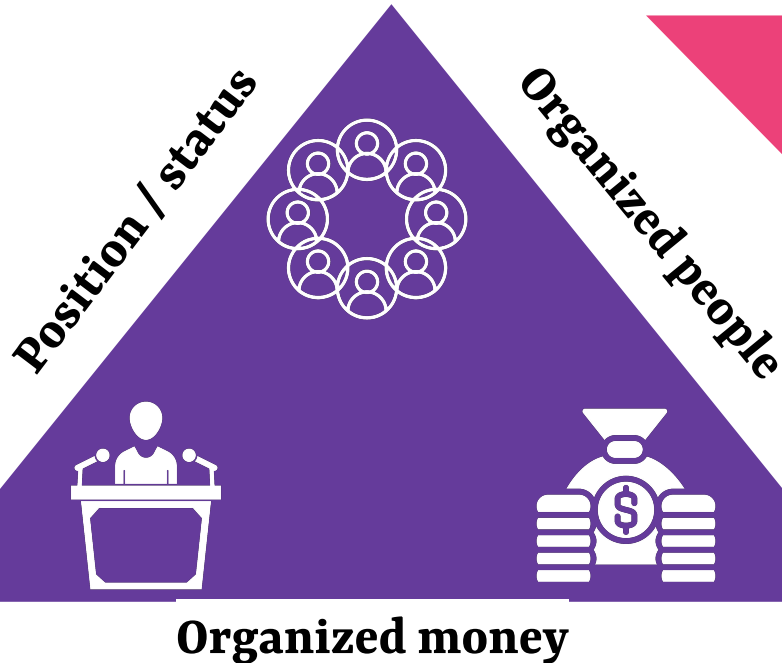
The Inverted Triangle



Together, We Must Build Power Towards...



A Racially Equitable Early Childhood System



It's not possible to build and wield power without constantly developing and activating leaders.



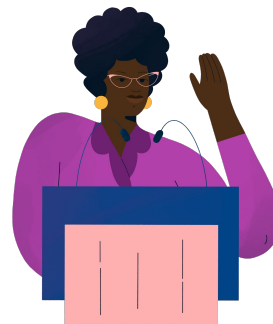
WEPOWER
TOMORROW BUILDERS
FELLOWSHIP

To reduce the harm to our communities caused by unjustly designed systems, our changemakers bring stakeholders of all kinds together to understand the root causes of injustice, then imagine, design, and build an entirely new system.



WEPOWER
POWER BUILDING
ACADEMY

To create an entirely new system, imagined and designed through the Tomorrow Building program, changemakers organize to build people-power through grassroots electoral and direct action campaigns to change policies.



WEPOWER
CHISHOLM'S CHAIR
FELLOWSHIP

To assert people-power at tables where policy and systems-level decisions get made, changemakers develop ethical, justice-oriented, public leadership skills as they consider appointed and elected positions to advance newly imagined systems born from Tomorrow and Power Building.



THE PLAYBOOK

REIMAGINED + REDESIGNED
EARLY CHILDHOOD EDUCATION

a St. Louis community-led response to the *First Step to Equity* report



EST. 2018

WEPOWER

Playbook Solutions

These solutions are driven by community insight and values, evidence-informed and evidence-based research, and promising practices. They focus on improving outcomes for children, specifically ages 0-5.



WORKFORCE

- W-1** Provide competitive wages & benefits
- W-2** Increase equitable access to professional credentials
- W-3** Create early pipelines to the ECE profession



FUNDING & ACCESS

- FA-1** Establish local public funding streams dedicated to early childhood education in St. Louis City and County by 2021
- FA-2** Pursue private investment
- FA-3** Better leverage existing funding sources



QUALITY

- Q-1** Implement a local Quality Assurance Report (QAR) system
- Q-2** Develop and implement a universal kindergarten readiness assessment for the region
- Q-3** Invest in ongoing professional development



FAMILY WELL-BEING

- FW-1** Establish neighborhood-based two-generation hubs
- FW-2** Increase access to culturally responsive health care
- FW-3** Advance local and state policies that improve financial security
- FW-4** Build parent and guardian advocacy skills
- FW-5** Increase funding for home visiting programs



GOVERNANCE & COORDINATION

- GC-1** Establish a nonprofit tasked with quarterbacking the region's ECE system through the following key functions: Pursue private and public investment, then equitably allocate resources; ensure system-level coordination; drive quality improvement; coordinate and bolster local advocacy efforts and increase public awareness
- GC-2** Ensure most-affected community members lead system coordination
- GC-3** Facilitate the creation of a regional centralized data hub

Case Study: Yes on R

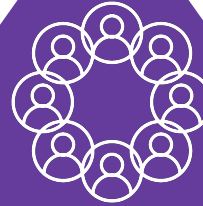


**WE WON \$2.3 MILLION PER
YEAR IN PUBLIC FUNDING**

**Knocked on 21k+ voters doors
70+ 1:1s and community presentations
71k+ voters in support / 56.3% support**

Organized people

30+ Leaders
(trained on organizing via WEPOWER)



Position / status

50+ endorsements from
elected and other
leaders.



Organized money

Raised \$150,000+

